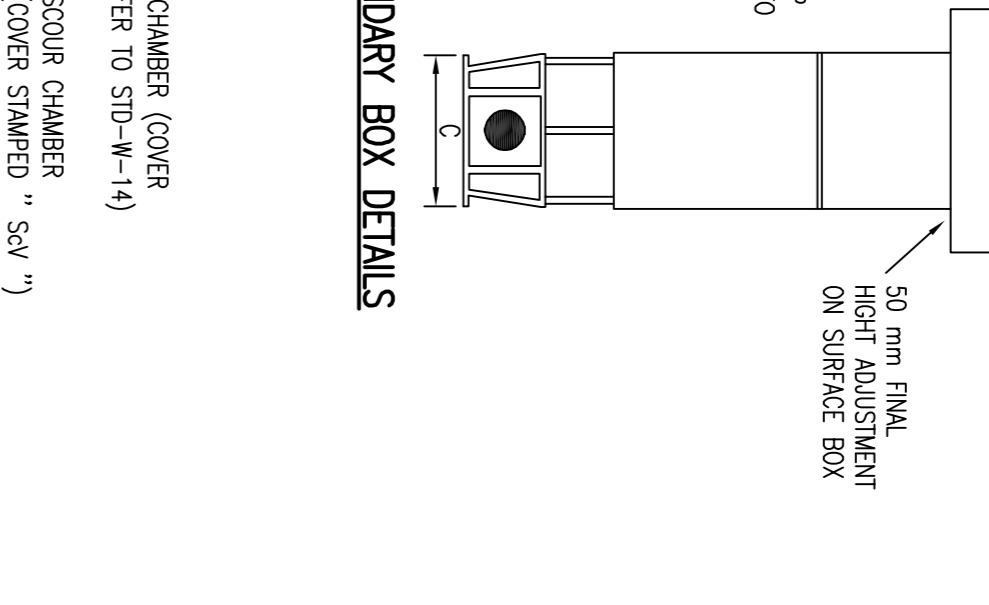
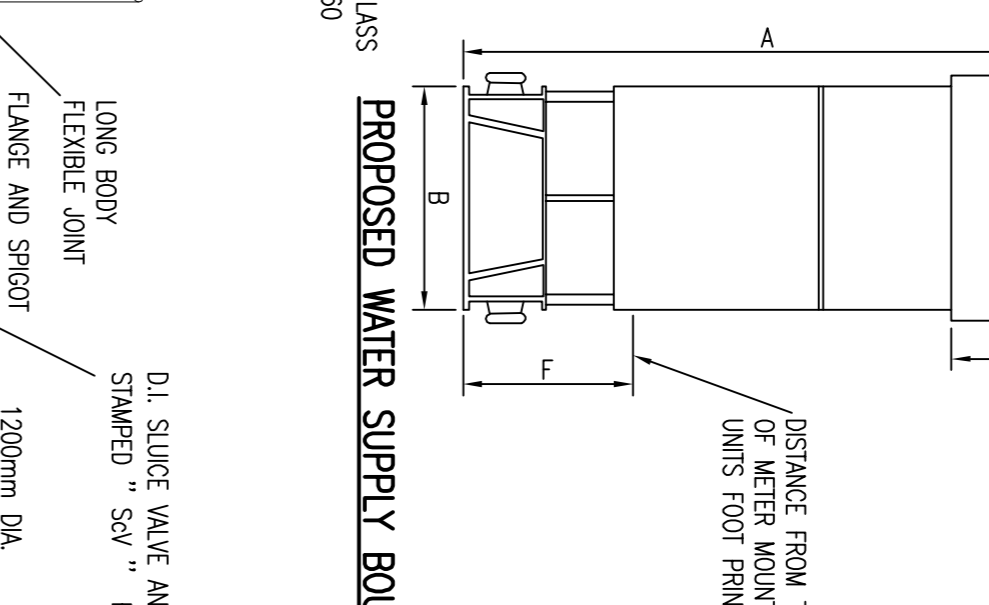
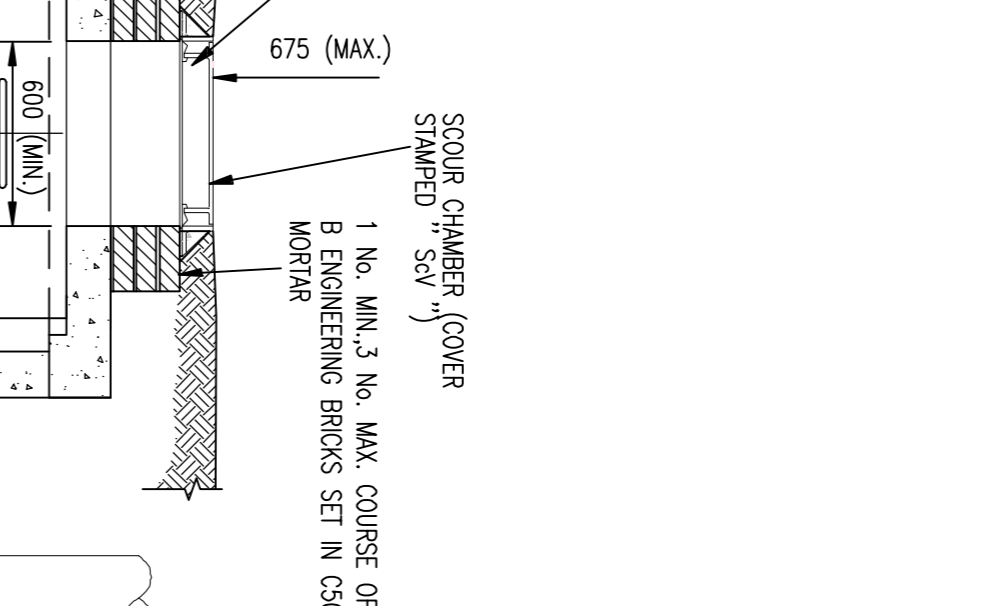
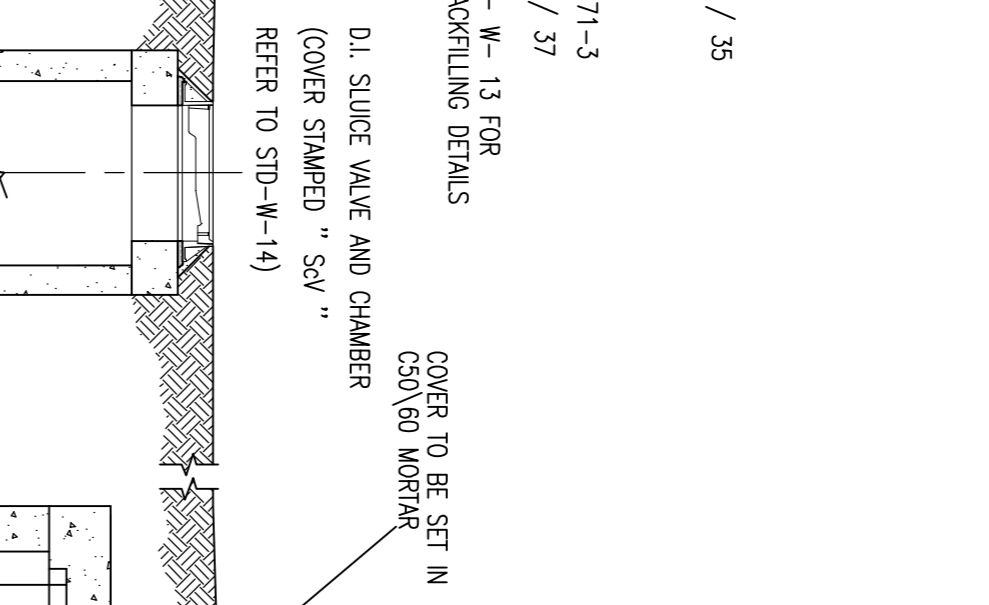
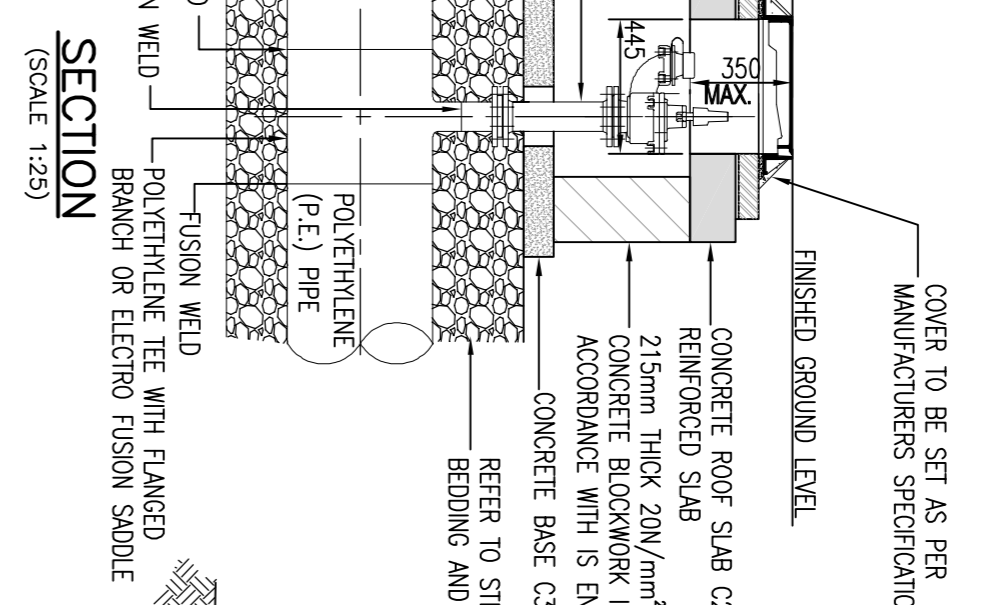
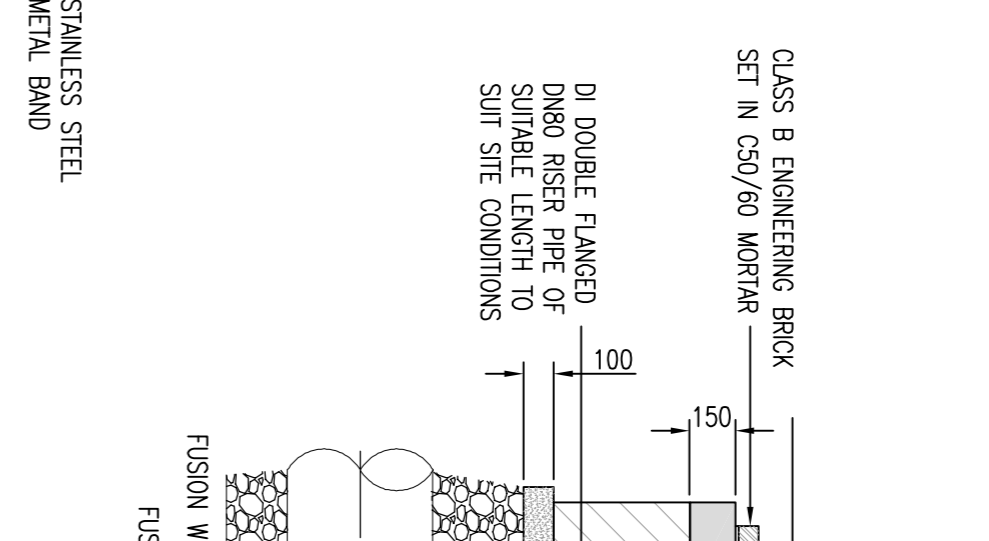
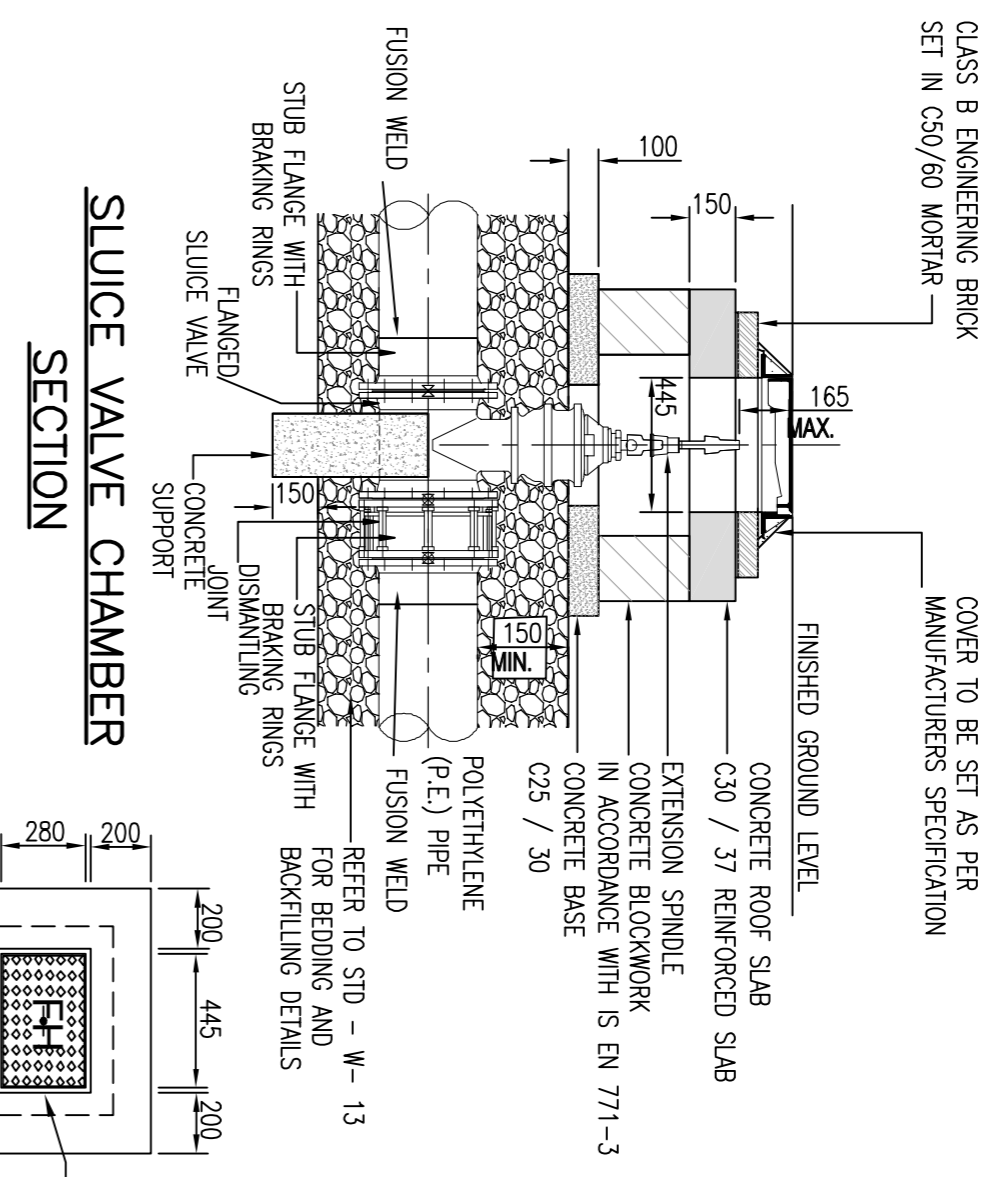


SLUICE VALVE NOTES:

1. ALL DIMENSIONS IN MILLIMETRES (mm) UNLESS NOTED OTHERWISE.
2. SLUICE VALVE CHAMBERS SHALL BE COVERED WITH APPROVED HEAVY DUTY METAL COVERS TO BS 261 AND BS 5834.
3. COVER AND FRAME SHALL BE SUITABLE FOR ROAD AND TRAFFIC CONDITIONS AND IS SUBJECT TO THE APPROVAL OF RISH WATER.
4. SLUICE VALVES SHALL BE RESISTANT TO ROAD AND TRAFFIC LOADS AND SHALL COMPLY WITH BS 5163-1, BS 5163-2, IS EN 1074-1, IS EN 1074-2 OR EQUIVALENT EU SPECIFICATIONS.
5. ALL SLUICE VALVES SHALL BE LIFT LOCKWASER CLOSING.
6. PRECAST CONCRETE CHAMBERS CONSTRUCTED USING OR HIGH DENSITY BLOCKWORK, ALTERNATIVELY PROPRIETARY PRECAST CHAMBERS SHALL BE USED. PRECAST CHAMBERS SHALL BE SURROUNDED BY A MINIMUM OF 150mm COMPACTED CLAUSET 808 MATERIAL AS PER STD-W-13.
7. DUCTILE IRON PIPES AND FITTINGS TO BE IN ACCORDANCE WITH IS EN 545, PE PIPES AND FITTINGS TO BE IN ACCORDANCE WITH IS EN 12201/2011.
8. 200mm ALL AROUND, 100mm DEEP CONCRETE PLINTH WITH PROTECTIVE STAINLESS STEEL METAL BAND AROUND COVER IN GREEN AREAS.
9. THRUST BLOCKS (NOT SHOWN ON DRAWING), TO BE PROVIDED AS PER STANDARD DRAWING STD-W-28 AT ALL TEES, BENDS, TAPERS, DEAD ENDS AND PIPES AT STEEP SLOPES.
10. ANTI-CORROSION TAPE TO BE PROVIDED AROUND BURRED FLANGES.
11. ALL CONCRETE TO BE IN ACCORDANCE WITH IS EN 206.

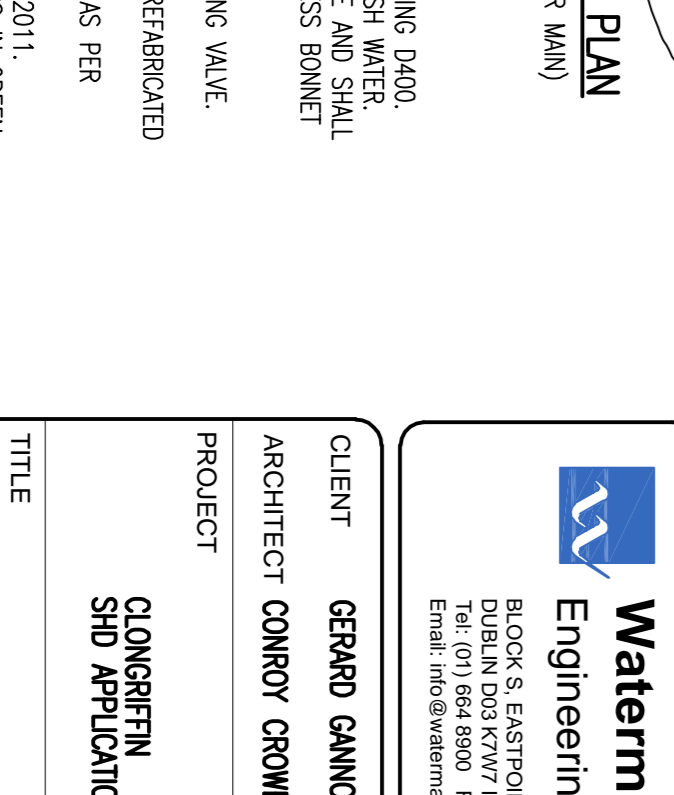
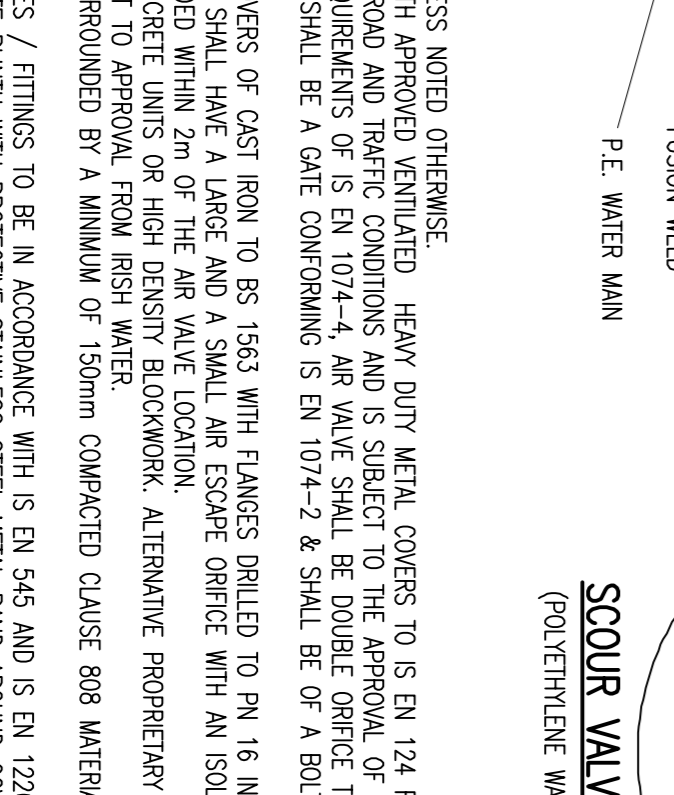
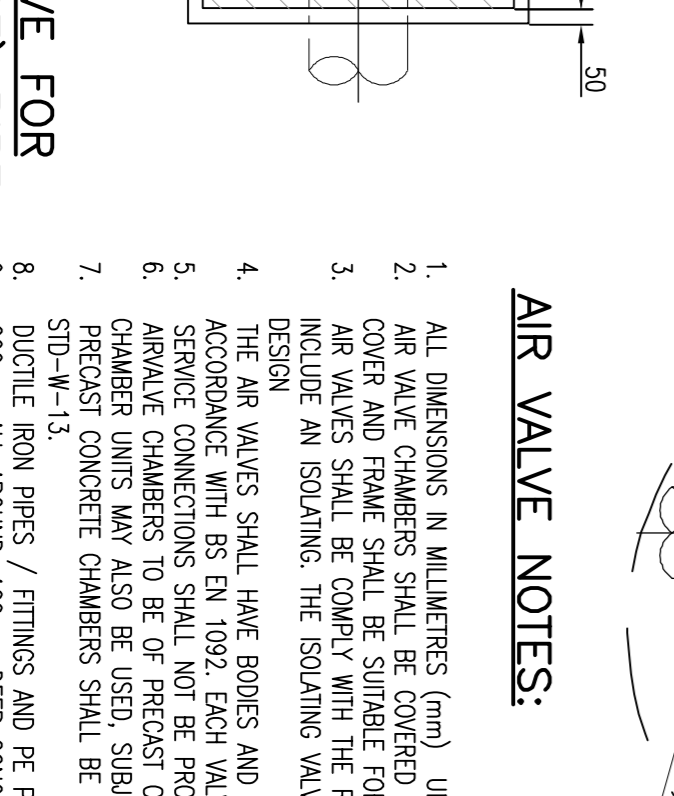
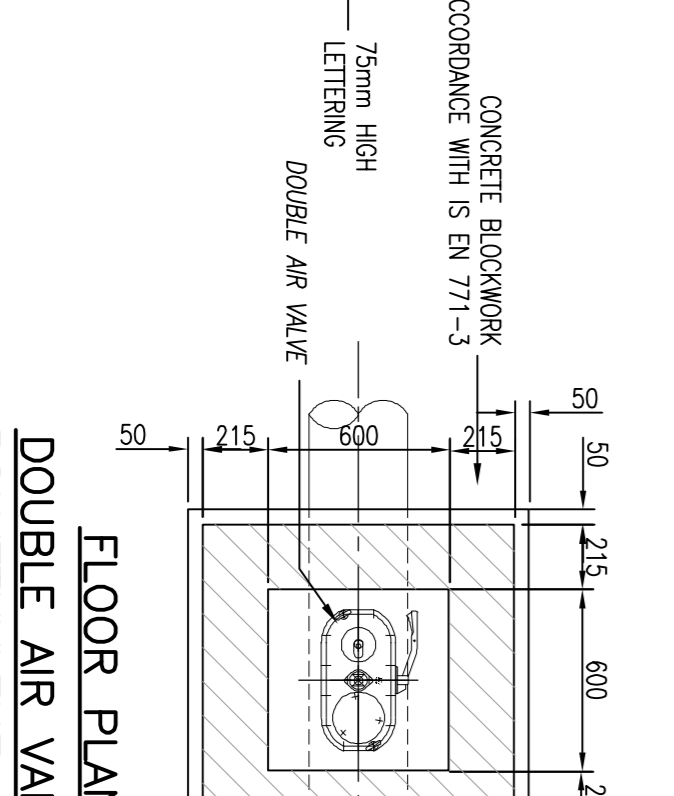
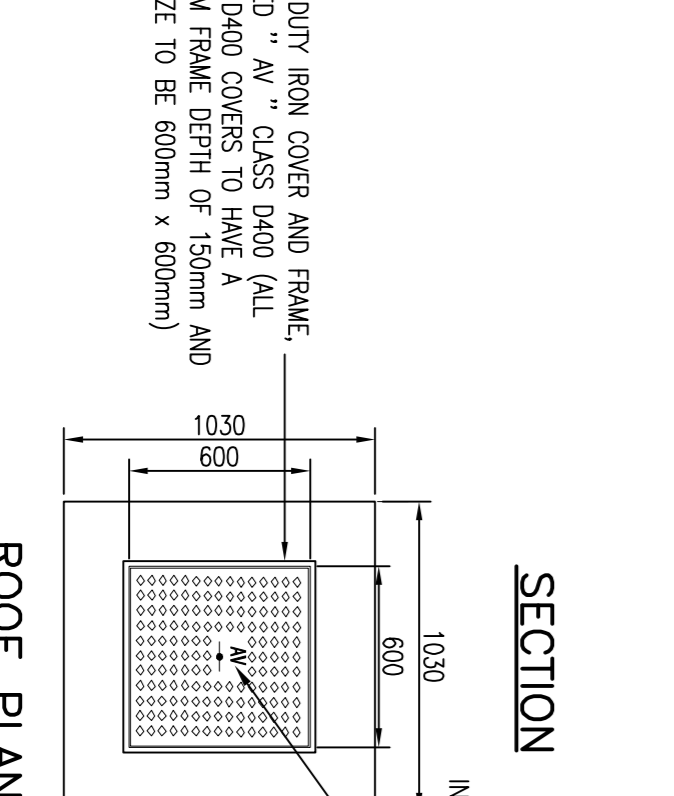
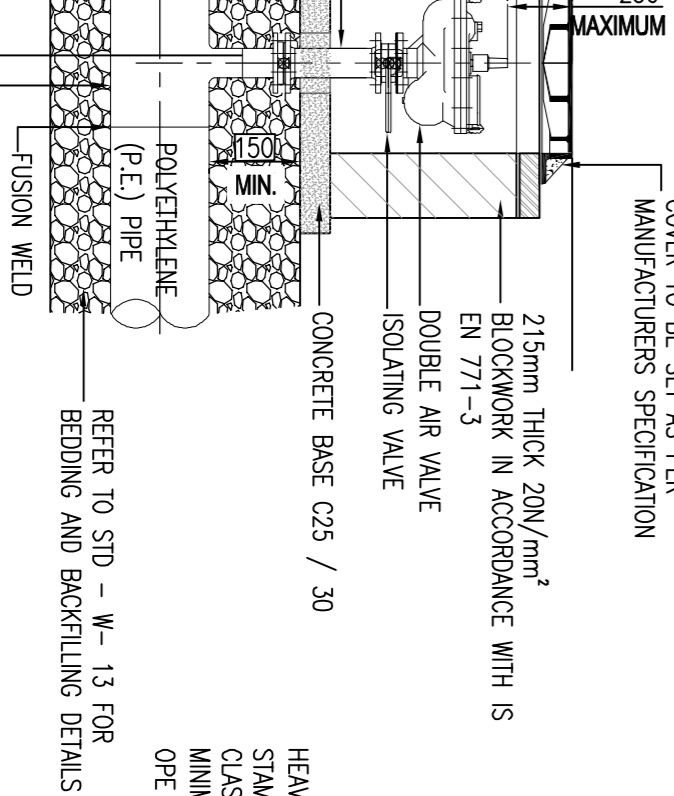
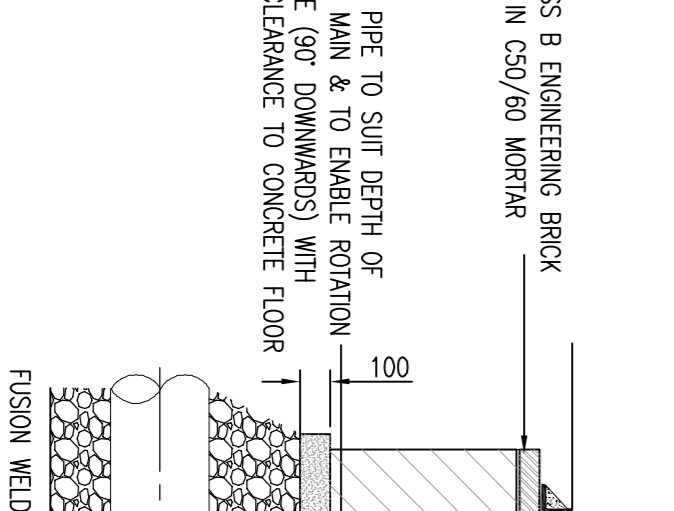
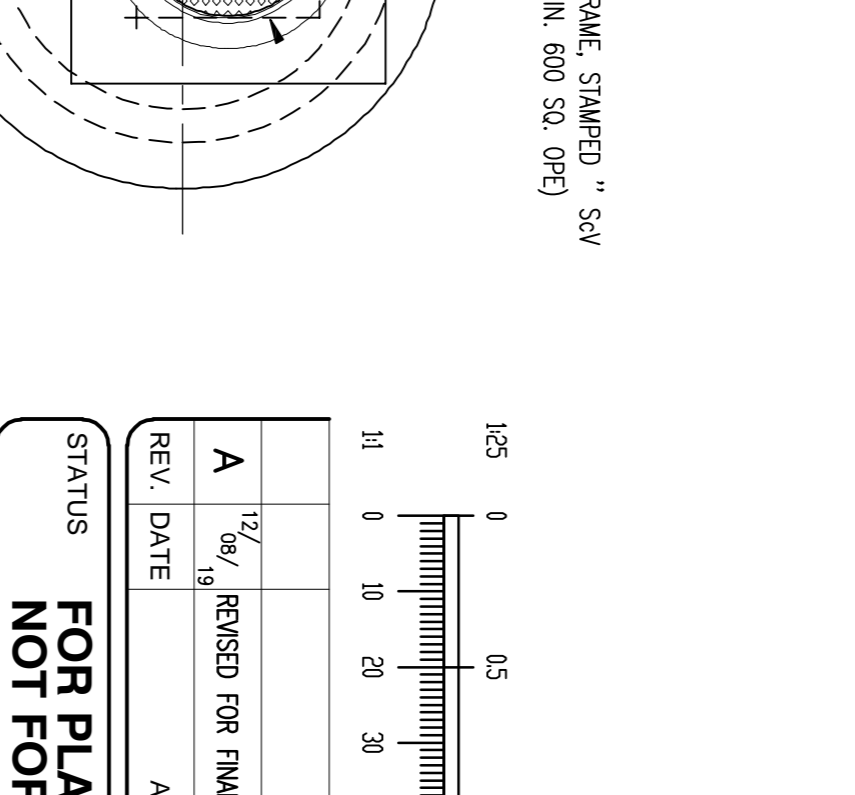
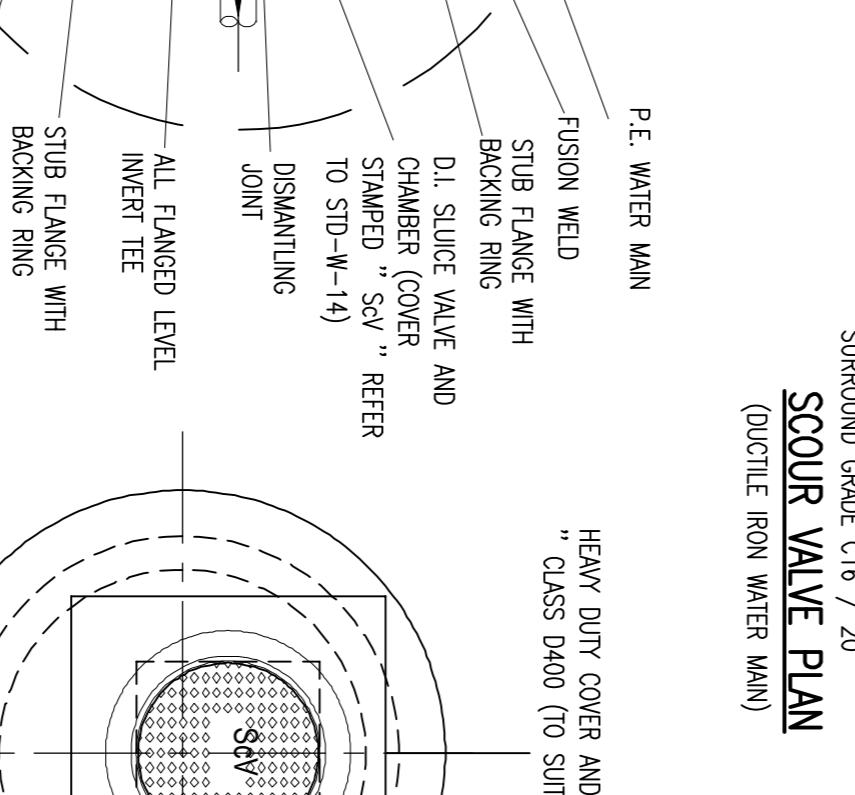
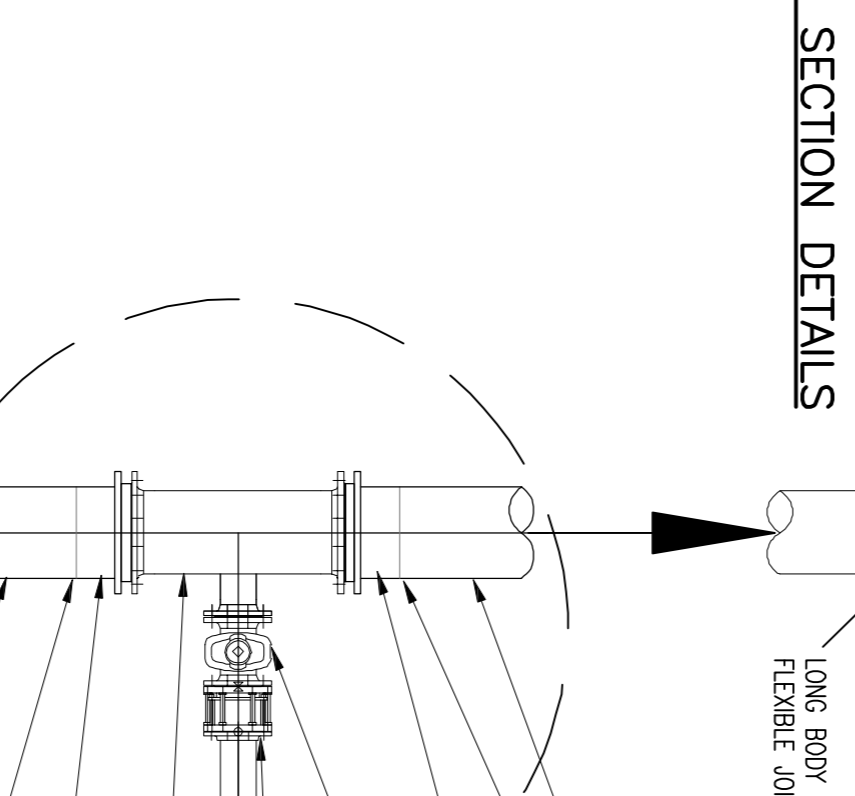
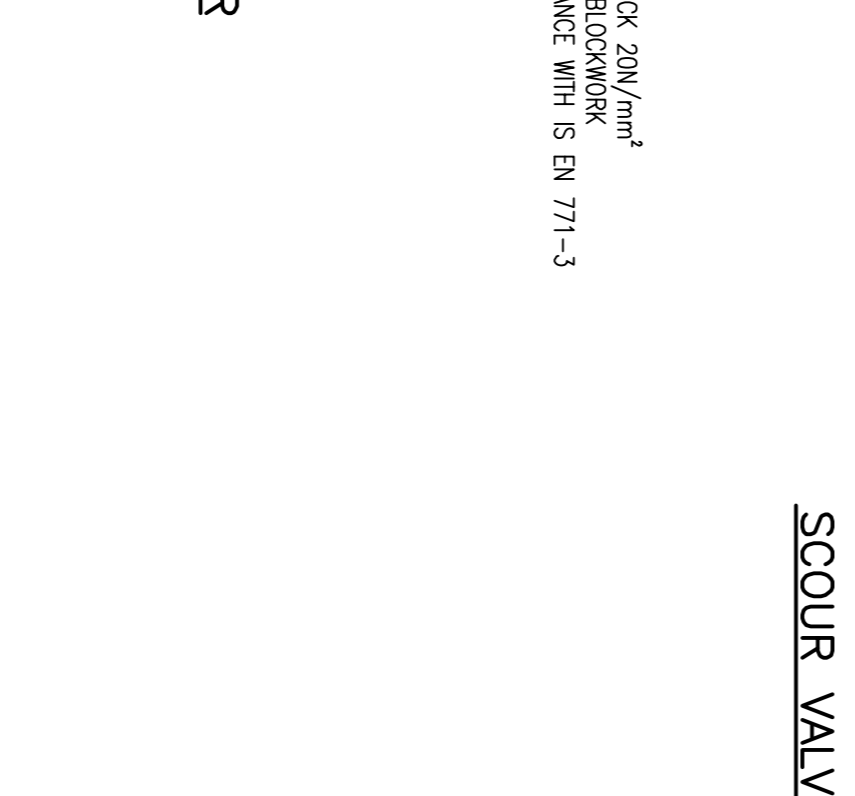
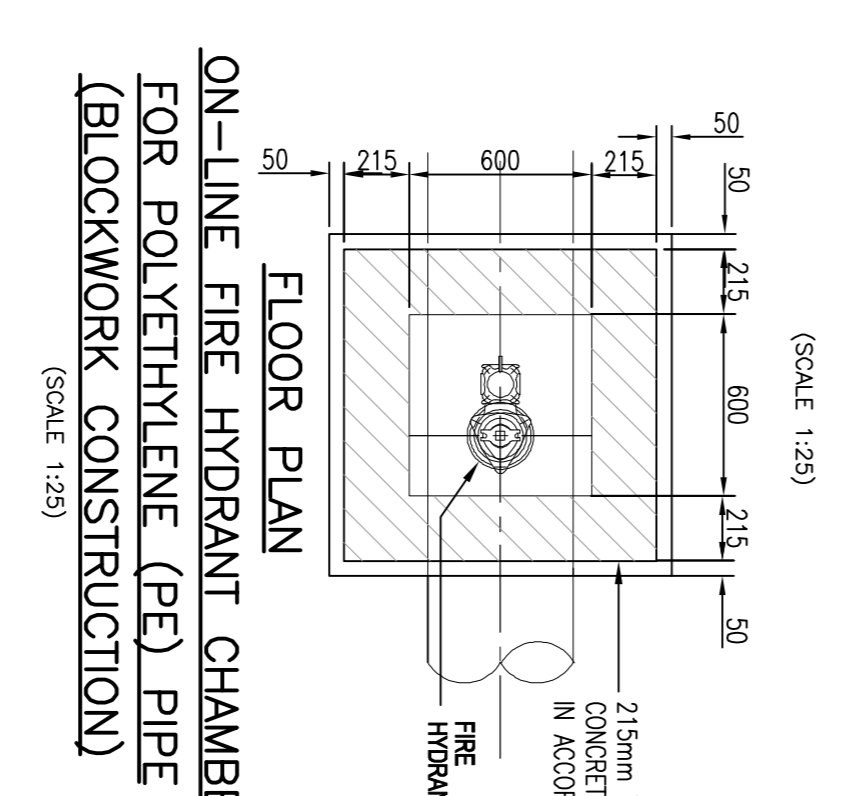
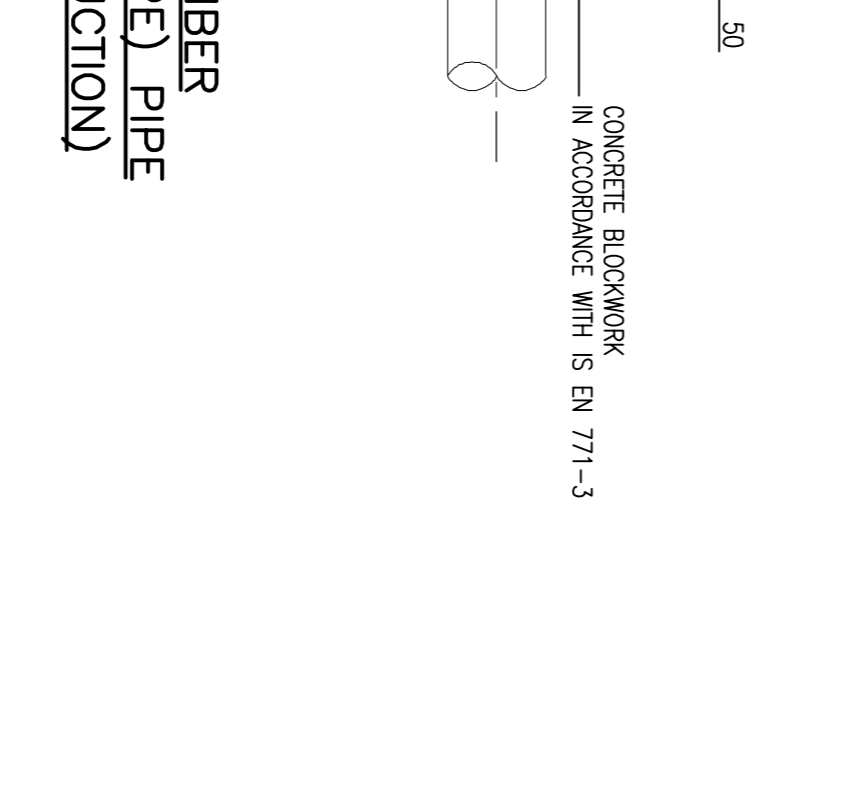
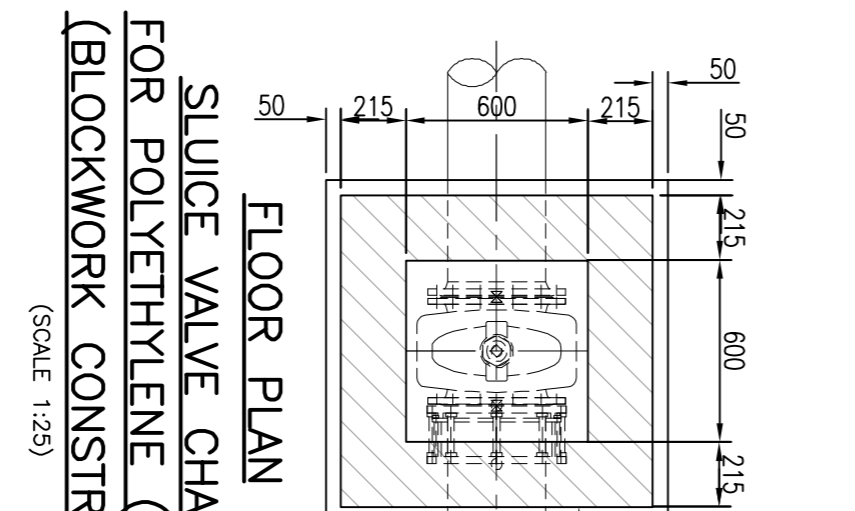
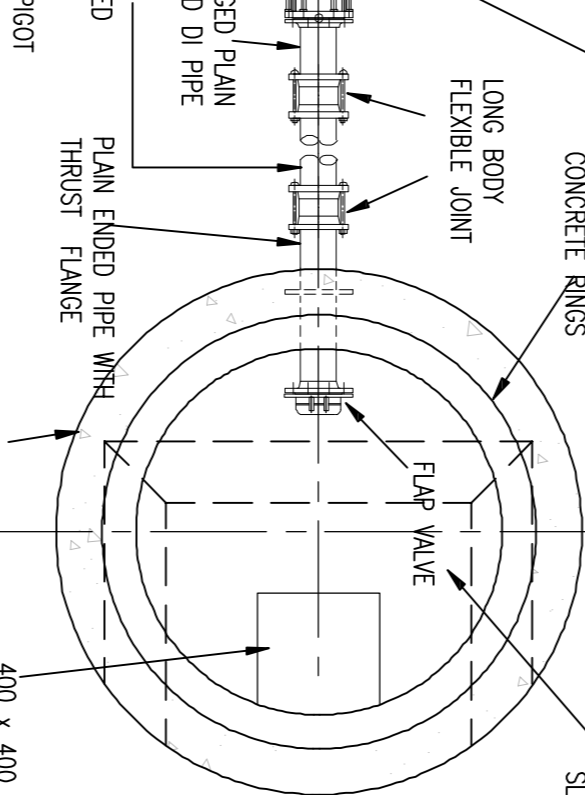
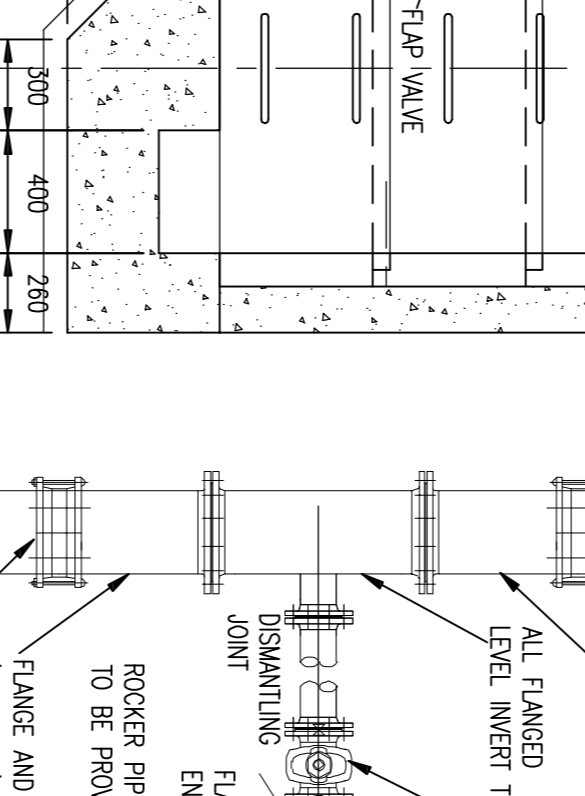
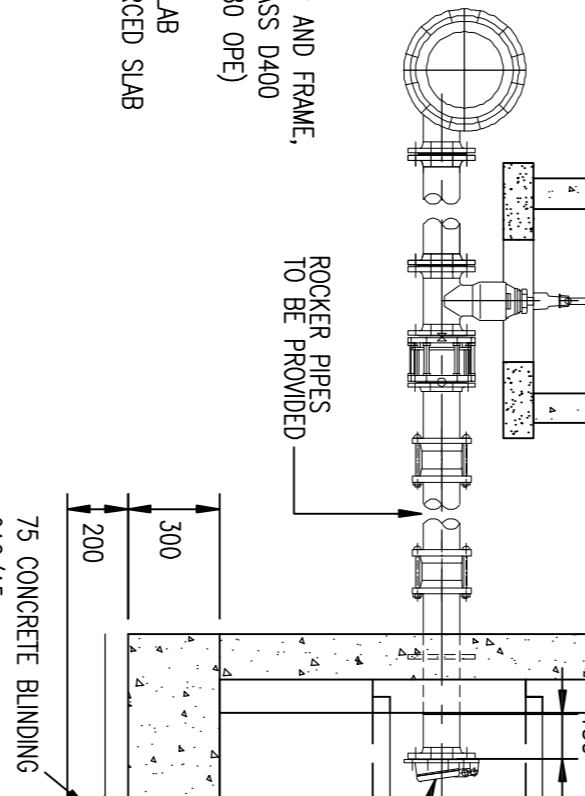
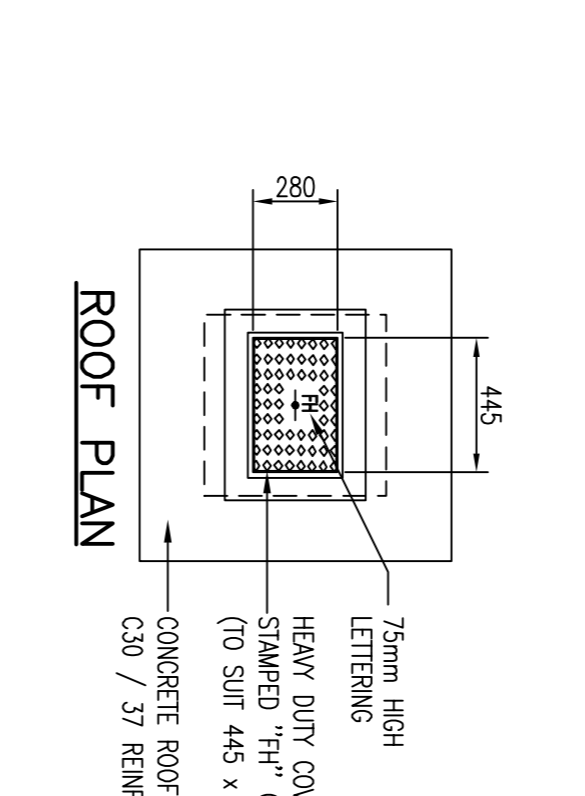
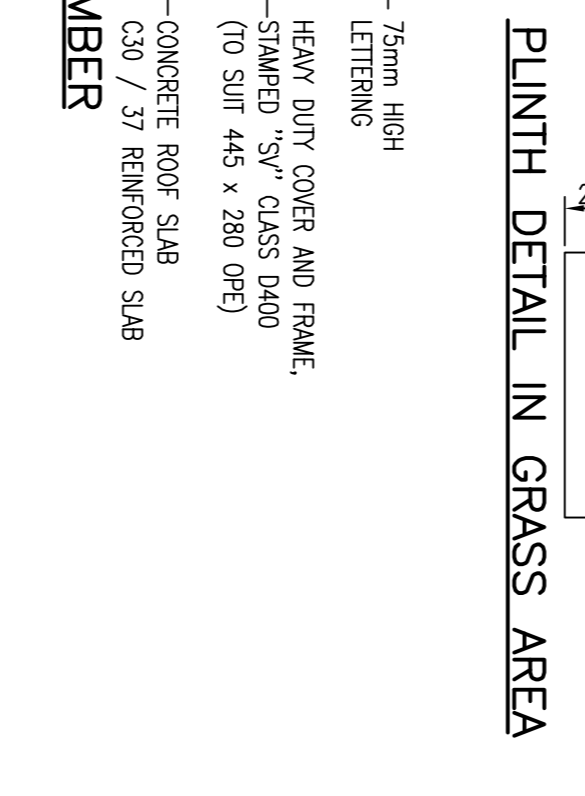
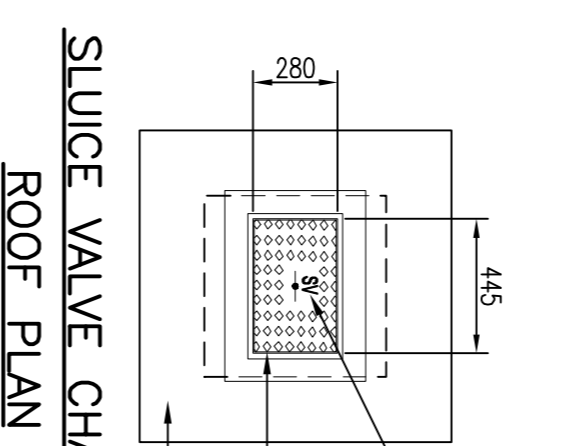
HYDRANT NOTES:

1. ALL DIMENSIONS IN MILLIMETRES (mm) UNLESS NOTED OTHERWISE.
2. HYDRANT CHAMBERS SHALL BE COVERED WITH APPROVED HEAVY DUTY METAL COVERS TO IS EN 261 AND BS 5834 COVER AND FRAME SHALL BE SUITABLE FOR ROAD AND TRAFFIC CONDITIONS AND IS SUBJECT TO THE APPROVAL OF RISH WATER.
3. ALL HYDRANTS SURFACE BOX FRAMES & COVERS SHALL COMPLY WITH THE RELEVANT PROVISIONS OF IS EN 14339, IS EN 1074-6 & BS750. THE HYDRANT INLET SHALL BE 80mm DIAMETER WITH PN16.
4. ALL HYDRANTS SHALL BE LIFT LOCKWASER CLOSING.
5. PRECAST CONCRETE CHAMBERS CONSTRUCTED USING OR HIGH DENSITY BLOCKWORK, ALTERNATIVELY PROPRIETARY PRECAST CHAMBERS SHALL BE USED. PRECAST CHAMBERS SHALL BE SURROUNDED BY A MINIMUM OF 150mm COMPACTED CLAUSET 808 MATERIAL AS PER STD-W-13.
6. CONCRETE CHAMBERS SHALL BE SURROUNDED BY A MINIMUM OF 150mm COMPACTED CLAUSET 808 MATERIAL AS PER STD-W-13.
7. DUCTILE IRON PIPES AND FITTINGS TO BE IN ACCORDANCE WITH IS EN 545, PE PIPES AND FITTINGS TO BE IN ACCORDANCE WITH IS EN 12201/2011.
8. 200mm ALL AROUND, 100mm DEEP CONCRETE PLINTH WITH PROTECTIVE STAINLESS STEEL METAL BAND AROUND COVER IN GREEN AREAS.
9. THRUST BLOCKS (NOT SHOWN ON DRAWING), TO BE PROVIDED AS PER STANDARD DRAWING STD-W-28 AT ALL TEES, BENDS, TAPERS, DEAD ENDS AND PIPES AT STEEP SLOPES.
10. ANTI-CORROSION TAPE TO BE PROVIDED AROUND BURRED FLANGES.
11. ALL CONCRETE TO BE IN ACCORDANCE WITH IS EN 206.



Dimensions and details									
Box Type	A (mm)	B (mm)	C (mm)	D (mm)	E (mm)	F (mm)	G (mm)	H (mm)	Weight (kg)
Standard Unit (20mm, 25mm and 30mm connections)	490mm	670mm	200mm	151mm	20mm	170mm	170mm	225mm	4.9kg
Small Units	300mm	540mm	200mm	151mm	20mm	170mm	170mm	225mm	3.4kg

Note: Unit can be supplied to suit tapered pipes including rain pipes and storm pipes tapered pipes.



Aug 18, 2018 - 3:09pm Drawing Location: M:\Projects\1818-658 - Congifin Planning\Applications\Drawings\Watermain Moynan\CD\Planning\SHD Application 118499-P1310 Watermain Construction Details Sheet 1 of 2.dwg

Watermain Moynan Engineering Consultants

Client: Gerard Gannon Properties

Project: Congifin SHD Application 1

Title: Watermain Construction Details Sheet 1 of 2

Scale: 1:25 @ A1

Drawn: PJD, Designed: PJD, Approved: MD, Date: NOV 18

Rev: 1, Date: 18-09-18, Prg No: P1310, Rev No: 1

Status: FOR PLANNING NOT FOR CONSTRUCTION

Watermain Moynan Engineering Consultants

Block S, Eastpoint Business Park, Alfreavale Road, Dublin 9, Ireland

Phone: (01) 664 8800, Fax: (01) 661 3818, Email: info@watermainmoynan.ie, www.watermainmoynan.ie

Gerard Gannon Properties, Conroy Crowe Kelly

Watermain Moynan Engineering Consultants

Block S, Eastpoint Business Park, Alfreavale Road, Dublin 9, Ireland

Phone: (01) 664 8800, Fax: (01) 661 3818, Email: info@watermainmoynan.ie, www.watermainmoynan.ie

Gerard Gannon Properties, Conroy Crowe Kelly

Watermain Moynan Engineering Consultants

Block S, Eastpoint Business Park, Alfreavale Road, Dublin 9, Ireland

Phone: (01) 664 8800, Fax: (01) 661 3818, Email: info@watermainmoynan.ie, www.watermainmoynan.ie

Gerard Gannon Properties, Conroy Crowe Kelly

Watermain Moynan Engineering Consultants

Block S, Eastpoint Business Park, Alfreavale Road, Dublin 9, Ireland

Phone: (01) 664 8800, Fax: (01) 661 3818, Email: info@watermainmoynan.ie, www.watermainmoynan.ie

Gerard Gannon Properties, Conroy Crowe Kelly

Watermain Moynan Engineering Consultants

Block S, Eastpoint Business Park, Alfreavale Road, Dublin 9, Ireland

Phone: (01) 664 8800, Fax: (01) 661 3818, Email: info@watermainmoynan.ie, www.watermainmoynan.ie

Gerard Gannon Properties, Conroy Crowe Kelly

Watermain Moynan Engineering Consultants

Block S, Eastpoint Business Park, Alfreavale Road, Dublin 9, Ireland

Phone: (01) 664 8800, Fax: (01) 661 3818, Email: info@watermainmoynan.ie, www.watermainmoynan.ie

Gerard Gannon Properties, Conroy Crowe Kelly

Watermain Moynan Engineering Consultants

Block S, Eastpoint Business Park, Alfreavale Road, Dublin 9, Ireland

Phone: (01) 664 8800, Fax: (01) 661 3818, Email: info@watermainmoynan.ie, www.watermainmoynan.ie

Gerard Gannon Properties, Conroy Crowe Kelly

Watermain Moynan Engineering Consultants

Block S, Eastpoint Business Park, Alfreavale Road, Dublin 9, Ireland

Phone: (01) 664 8800, Fax: (01) 661 3818, Email: info@watermainmoynan.ie, www.watermainmoynan.ie

Gerard Gannon Properties, Conroy Crowe Kelly

Watermain Moynan Engineering Consultants

Block S, Eastpoint Business Park, Alfreavale Road, Dublin 9, Ireland

Phone: (01) 664 8800, Fax: (01) 661 3818, Email: info@watermainmoynan.ie, www.watermainmoynan.ie

Gerard Gannon Properties, Conroy Crowe Kelly

Watermain Moynan Engineering Consultants

Block S, Eastpoint Business Park, Alfreavale Road, Dublin 9, Ireland

Phone: (01) 664 8800, Fax: (01) 661 3818, Email: info@watermainmoynan.ie, www.watermainmoynan.ie

Gerard Gannon Properties, Conroy Crowe Kelly

Watermain Moynan Engineering Consultants

Block S, Eastpoint Business Park, Alfreavale Road, Dublin 9, Ireland

Phone: (01) 664 8800, Fax: (01) 661 3818, Email: info@watermainmoynan.ie, www.watermainmoynan.ie

Gerard Gannon Properties, Conroy Crowe Kelly

Watermain Moynan Engineering Consultants

Block S, Eastpoint Business Park, Alfreavale Road, Dublin 9, Ireland

Phone: (01) 664 8800, Fax: (01) 661 3818, Email: info@watermainmoynan.ie, www.watermainmoynan.ie

Gerard Gannon Properties, Conroy Crowe Kelly

Watermain Moynan Engineering Consultants

Block S, Eastpoint Business Park, Alfreavale Road, Dublin 9, Ireland

Phone: (01) 664 8800, Fax: (01) 661 3818, Email: info@watermainmoynan.ie, www.watermainmoynan.ie

Gerard Gannon Properties, Conroy Crowe Kelly

Watermain Moynan Engineering Consultants

Block S, Eastpoint Business Park, Alfreavale Road, Dublin 9, Ireland

Phone: (01) 664 8800, Fax: (01) 661 3818, Email: info@watermainmoynan.ie, www.watermainmoynan.ie

Gerard Gannon Properties, Conroy Crowe Kelly

Watermain Moynan Engineering Consultants

Block S, Eastpoint Business Park, Alfreavale Road, Dublin 9, Ireland

Phone: (01) 664 8800, Fax: (01) 661 3818, Email: info@watermainmoynan.ie, www.watermainmoynan.ie

Gerard Gannon Properties, Conroy Crowe Kelly

Watermain Moynan Engineering Consultants

Block S, Eastpoint Business Park, Alfreavale Road, Dublin 9, Ireland

Phone: (01) 664 8800, Fax: (01) 661 3818, Email: info@watermainmoynan.ie, www.watermainmoynan.ie

Gerard Gannon Properties, Conroy Crowe Kelly

Watermain Moynan Engineering Consultants

Block S, Eastpoint Business Park, Alfreavale Road, Dublin 9, Ireland

Phone: (01) 664 8800, Fax: (01) 661 3818, Email: info@watermainmoynan.ie, www.watermainmoynan.ie

Gerard Gannon Properties, Conroy Crowe Kelly

Watermain Moynan Engineering Consultants

Block S, Eastpoint Business Park, Alfreavale Road, Dublin 9, Ireland

Phone: (01) 664 8800, Fax: (01) 661 3818, Email: info@watermainmoynan.ie, www.watermainmoynan.ie

Gerard Gannon Properties, Conroy Crowe Kelly

Watermain Moynan Engineering Consultants

Block S, Eastpoint Business Park, Alfreavale Road, Dublin 9, Ireland

Phone: (01) 664 8800, Fax: (01) 661 3818, Email: info@watermainmoynan.ie, www.watermainmoynan.ie

Gerard Gannon Properties, Conroy Crowe Kelly

Watermain Moynan Engineering Consultants

Block S, Eastpoint Business Park, Alfreavale Road, Dublin 9, Ireland

Phone: (01) 664 8800, Fax: (01) 661 3818, Email: info@watermainmoynan.ie, www.watermainmoynan.ie